

Bandpassfilter 100 Watt

DG0SA

Wolfgang Wippermann

www.wolfgang-wippermann.de

wwippermann@t-online.de

Bandpassfilter 100 Watt

- Interpretation:

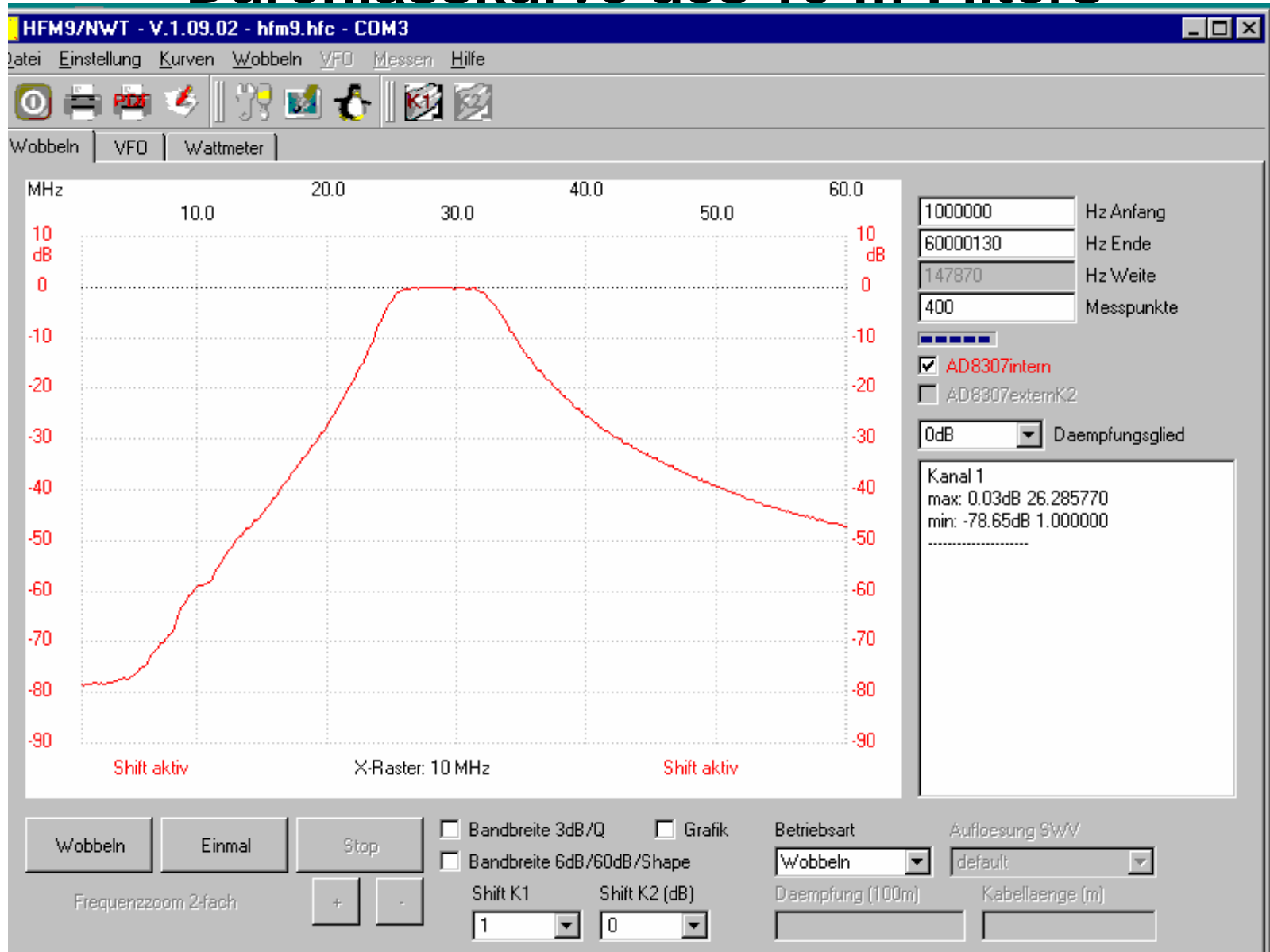
Die erste Folie zeigt die Durchlasskurve im Bereich 1 MHz bis 60 MHz

Die zweite Folie zeigt die Durchlasskurve im Bereich $f/2$ bis $2f$. Ist die Mittenfrequenz z.B. 14 MHz so wird der Bereich 7 MHz bis 28 MHz gezeigt

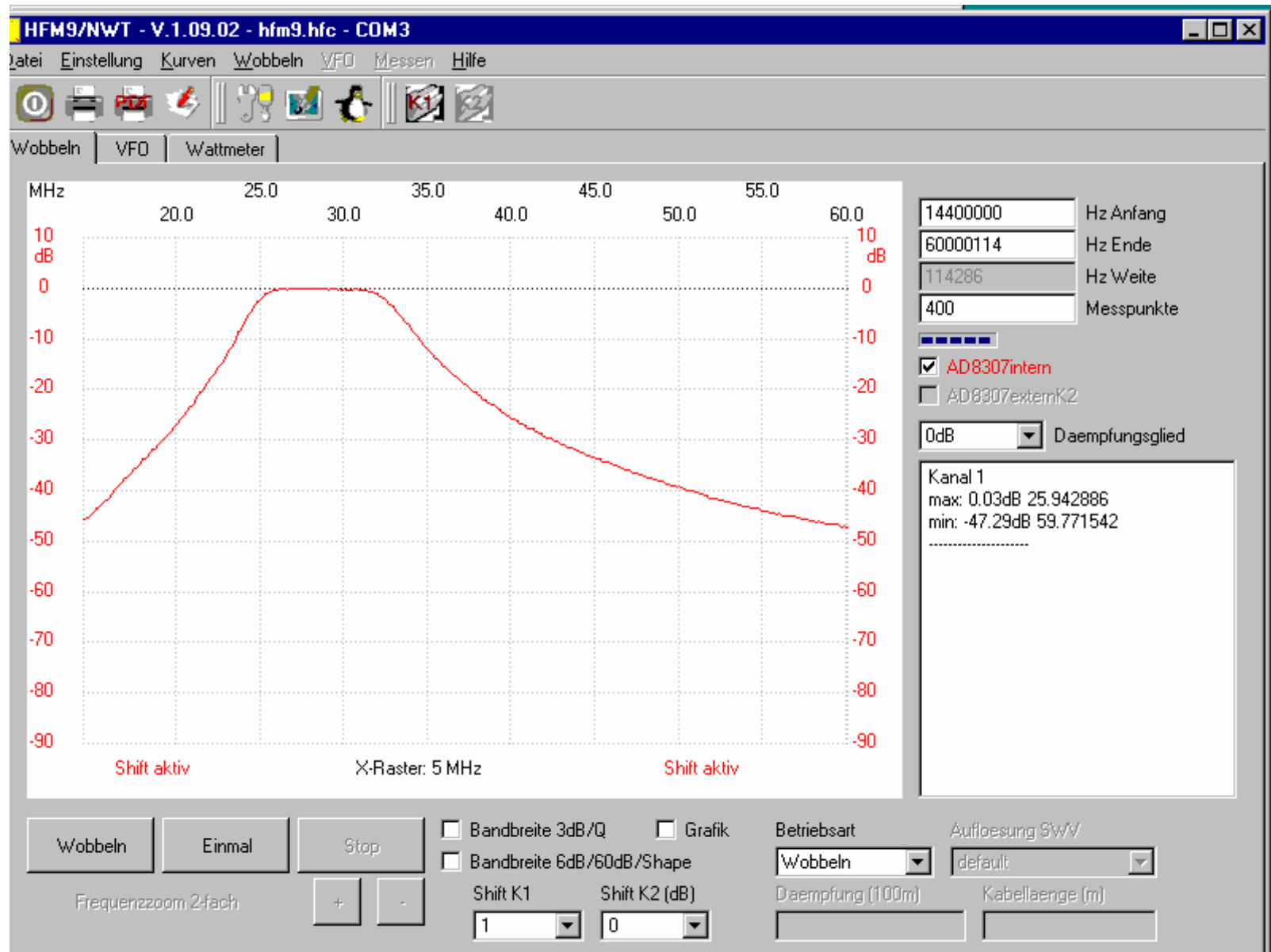
Die dritte Folie zeigt die Eingangsreflexion.

20dB entsprechen einem SWR von 1,23 und 30 dB einem SWR von 1,07

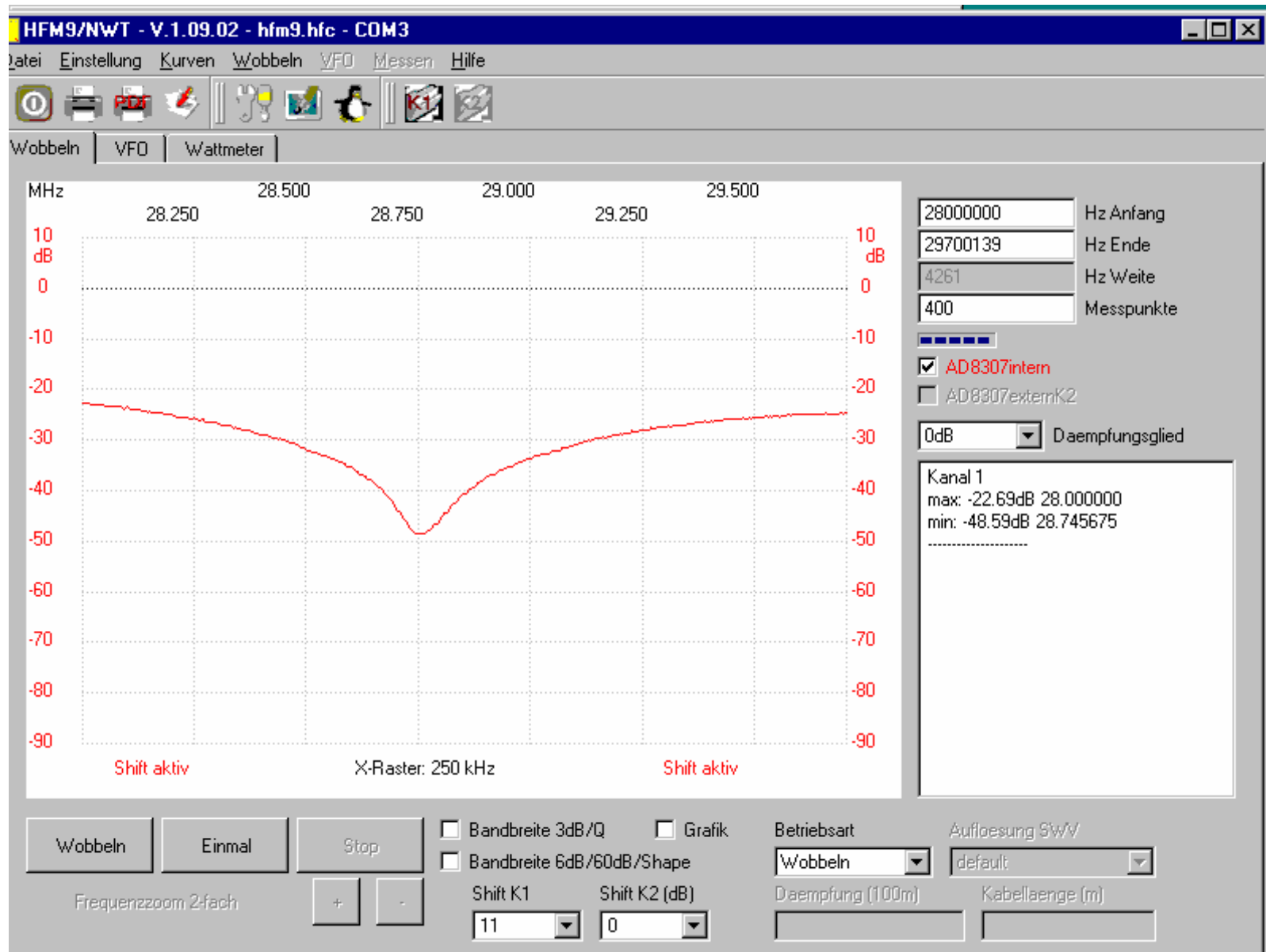
Durchlasskurve des 10-m-Filters



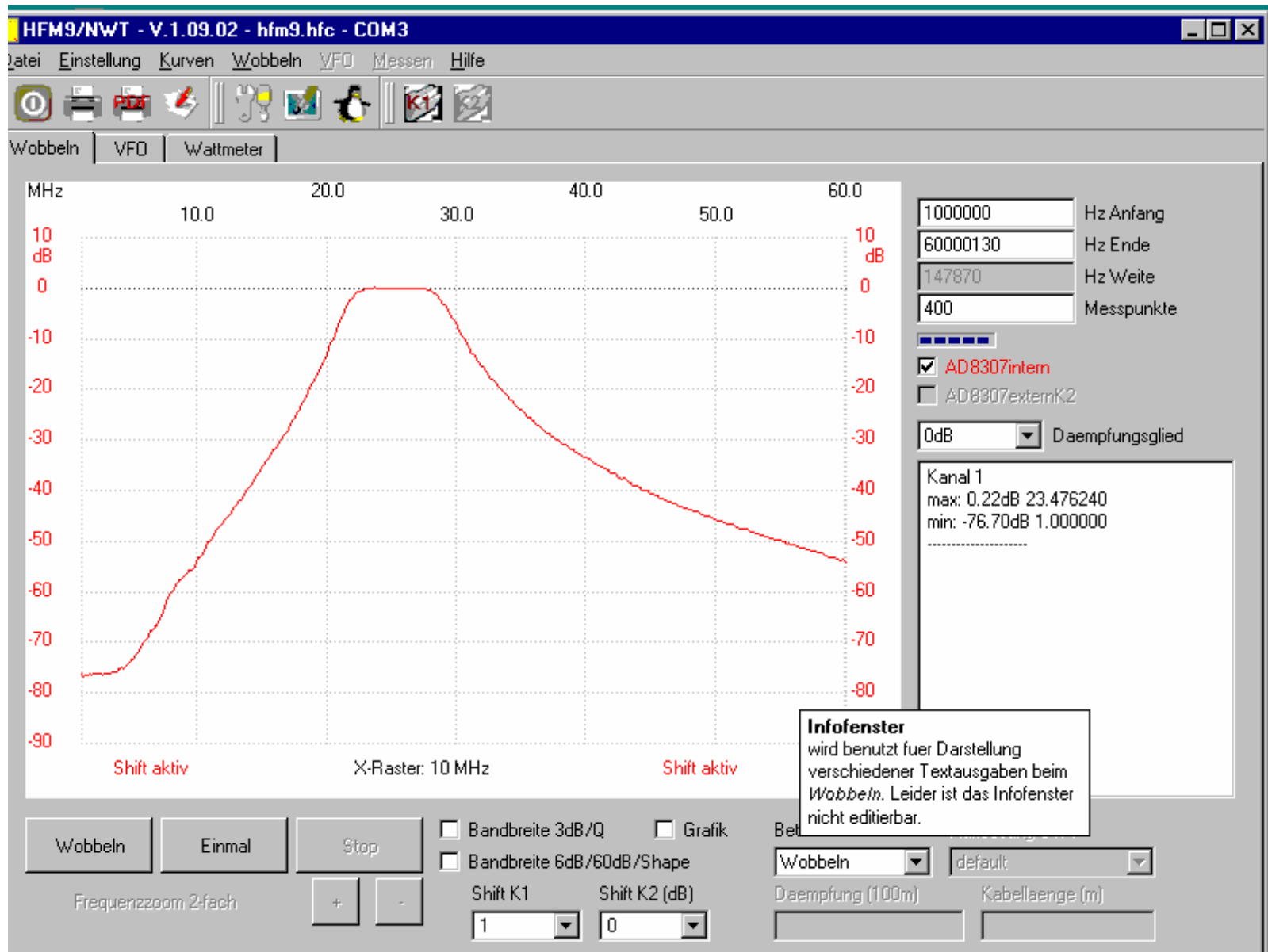
f/2 --- 2f Durchlasskurve des 10-m-Filters



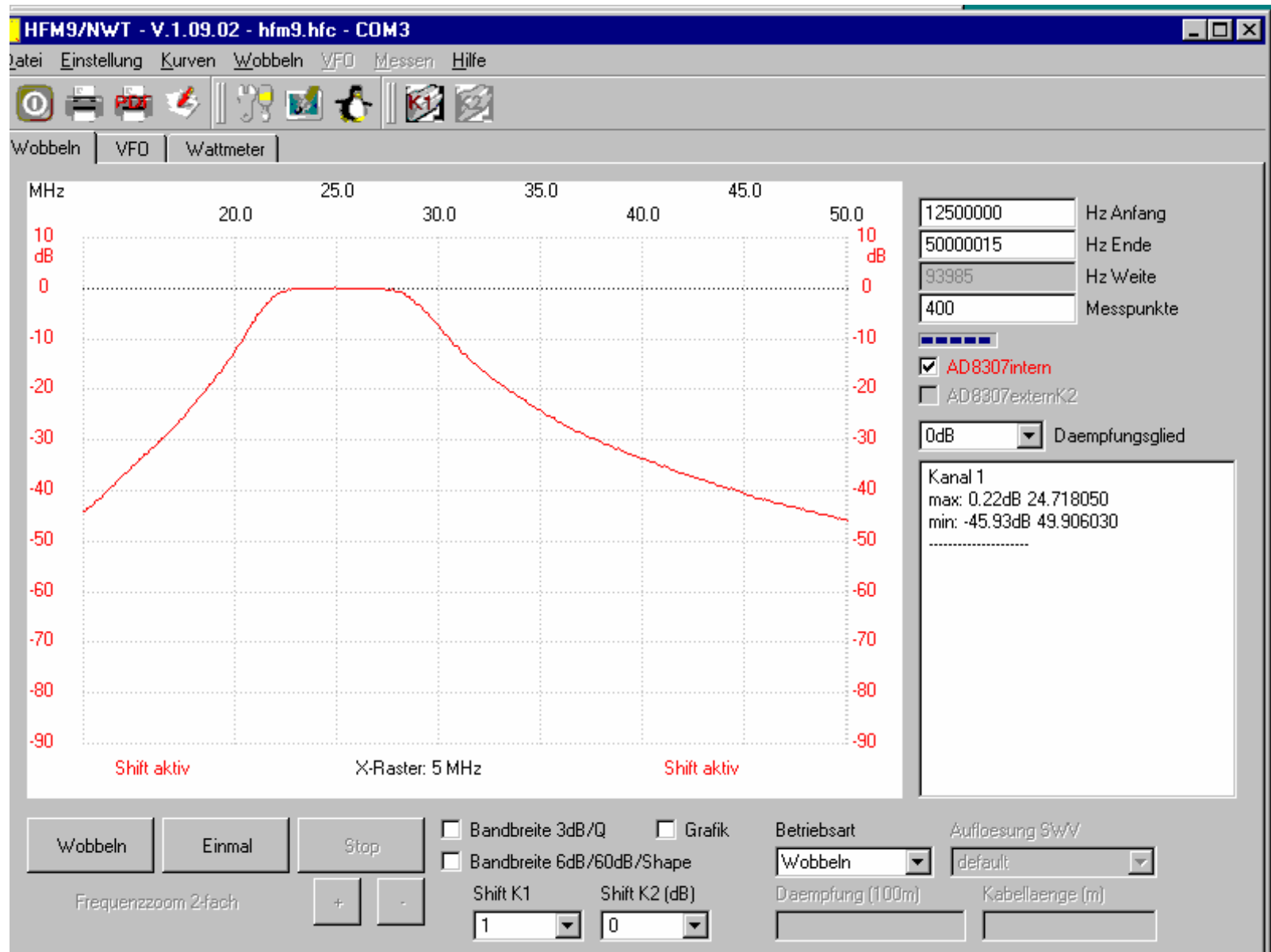
S11 im Durchlassbereich des 10-m-Filters



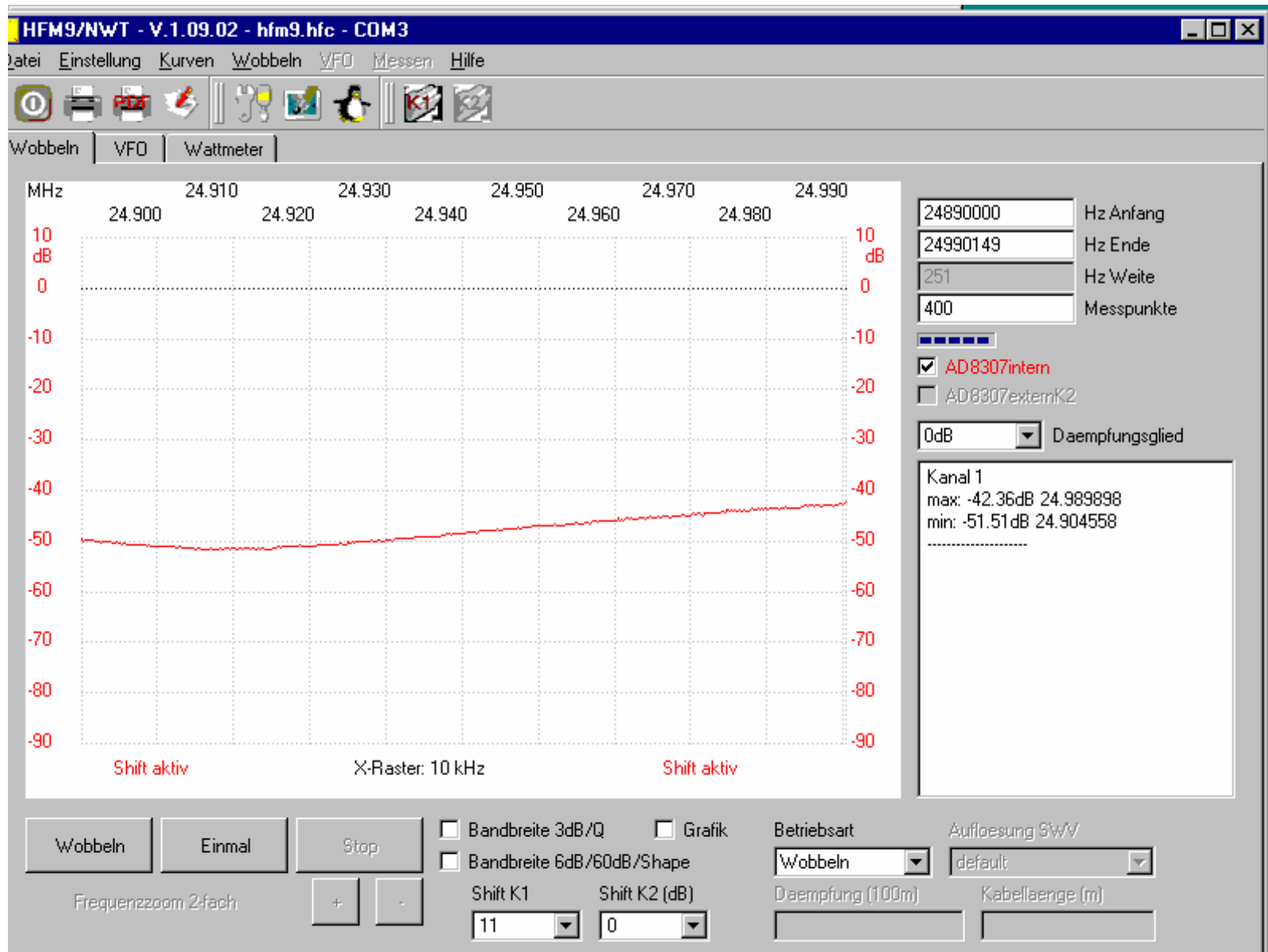
Durchlasskurve des 12-m-Filters



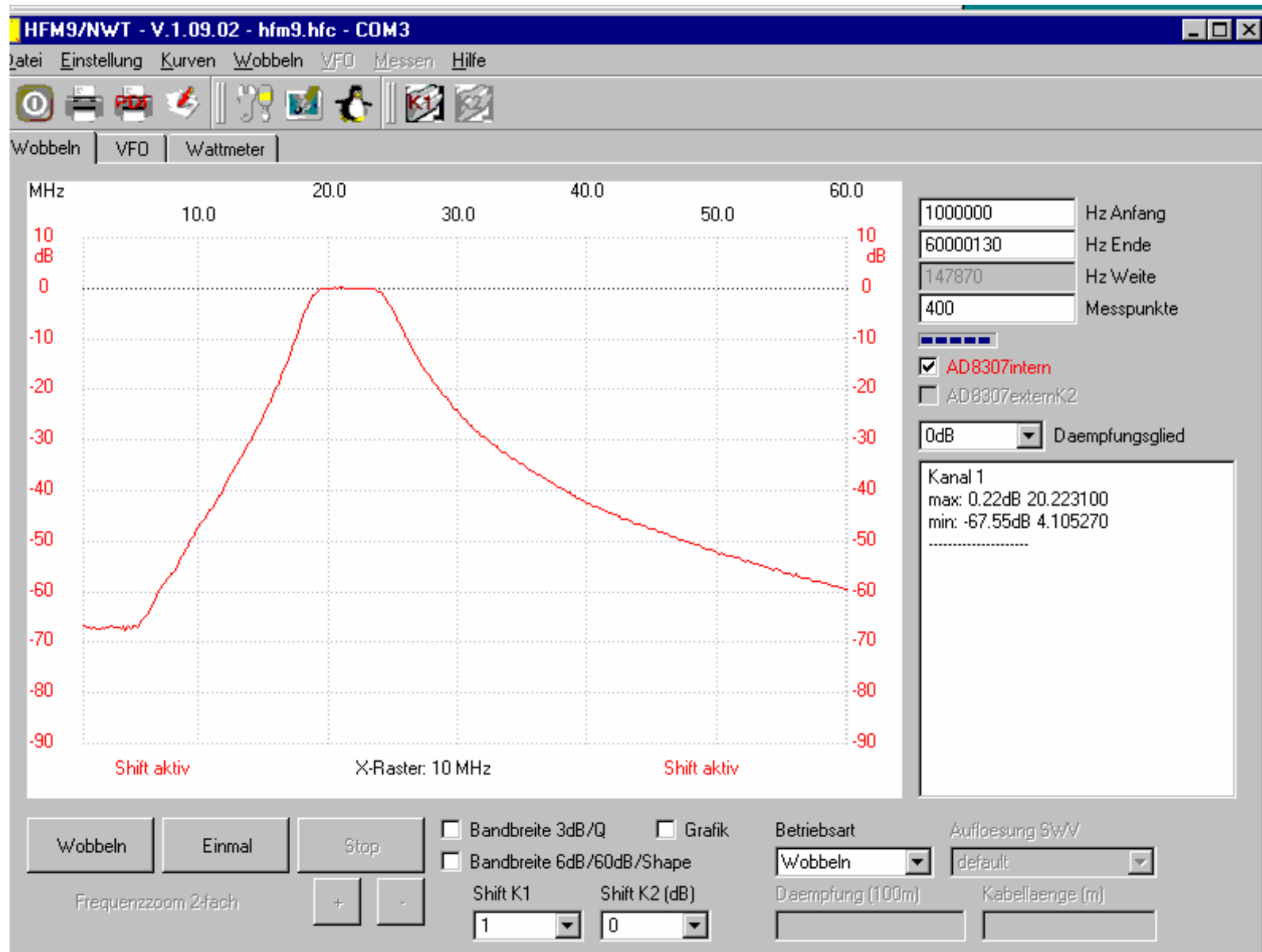
f/2 --- 2f Durchlasskurve des 12-m-Filters



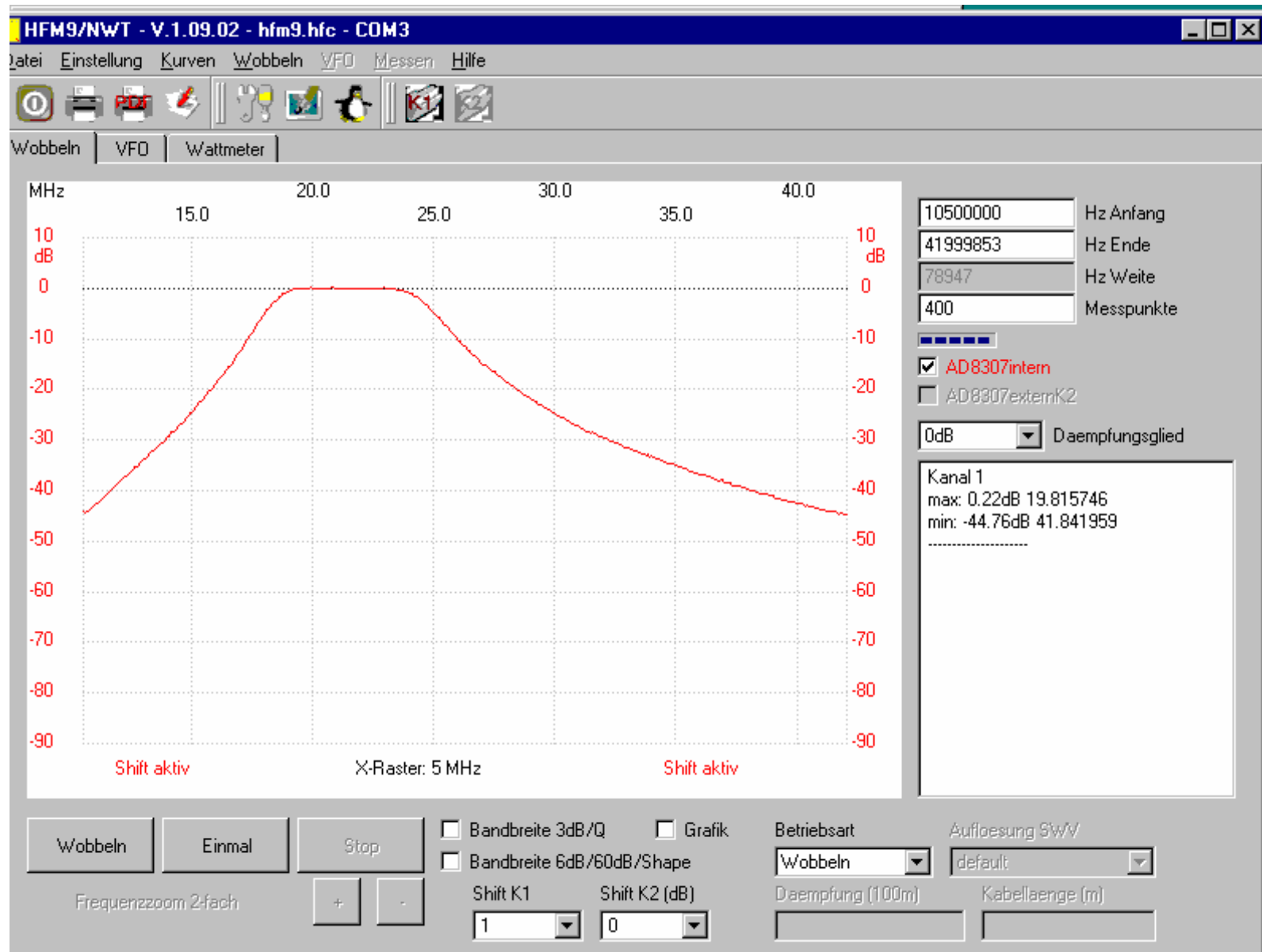
S11 im Durchlassbereich des 12-m-Filters



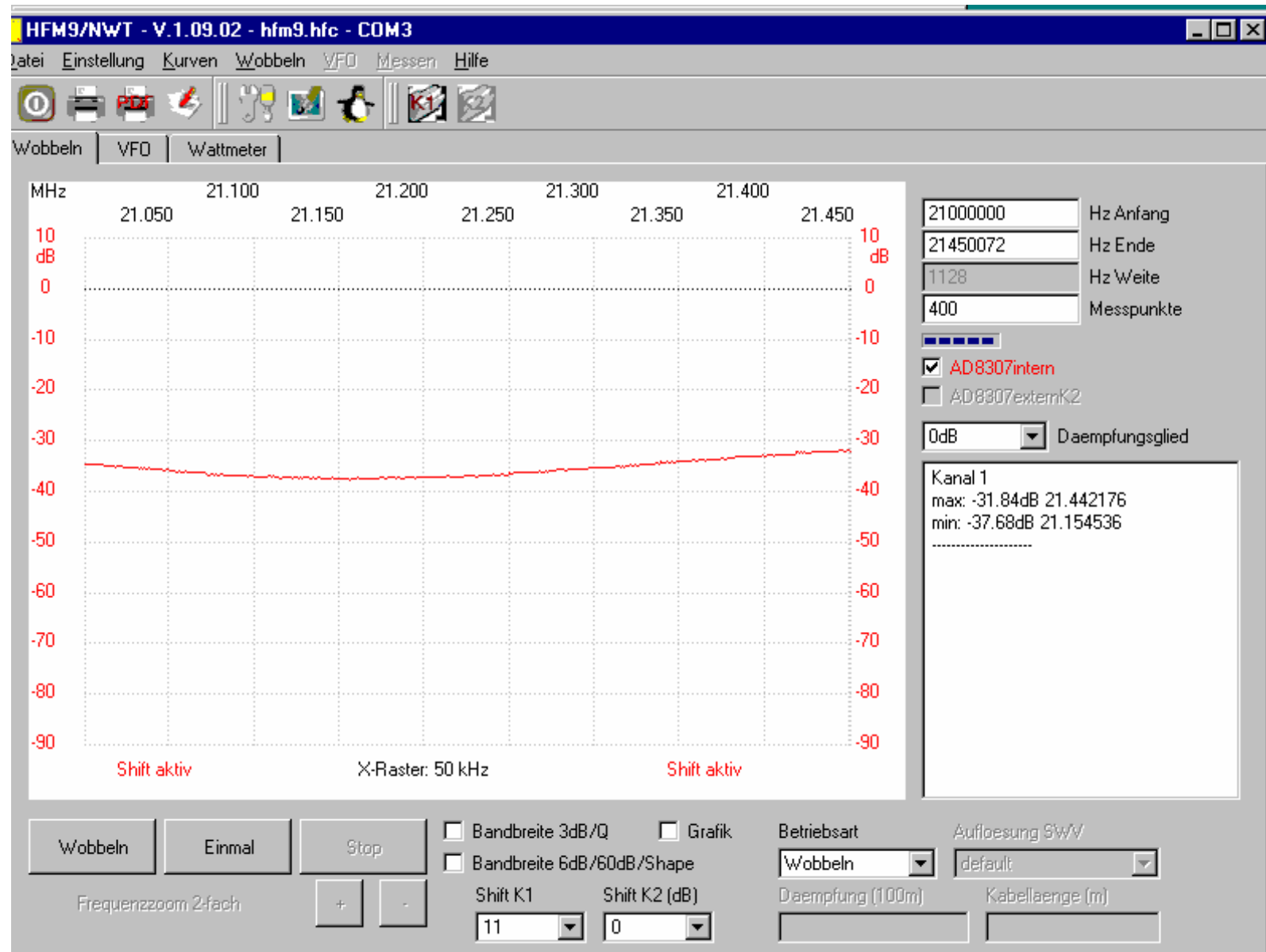
Durchlasskurve des 15-m-Filters



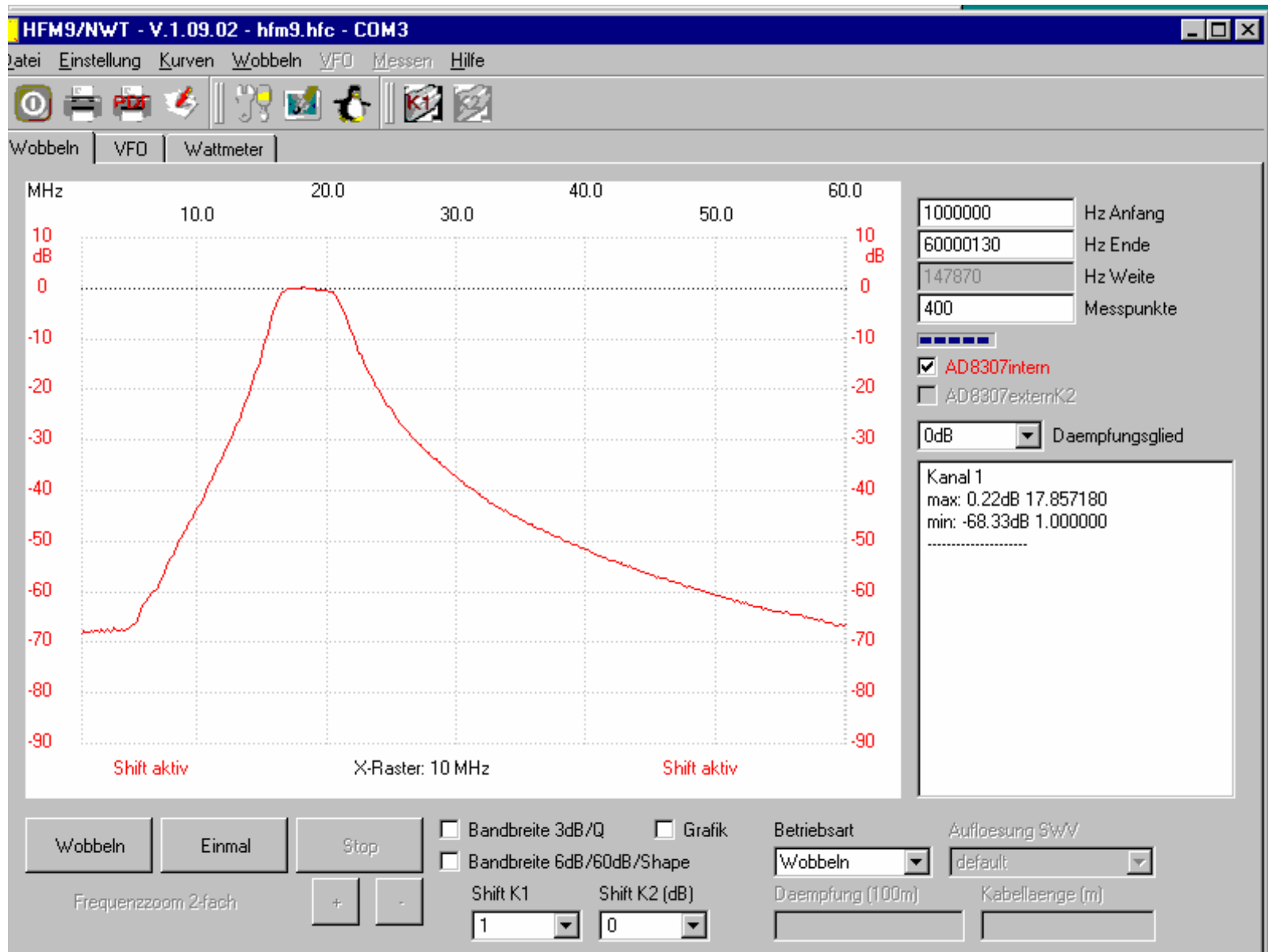
f/2 --- 2f Durchlasskurve des 15-m-Filters



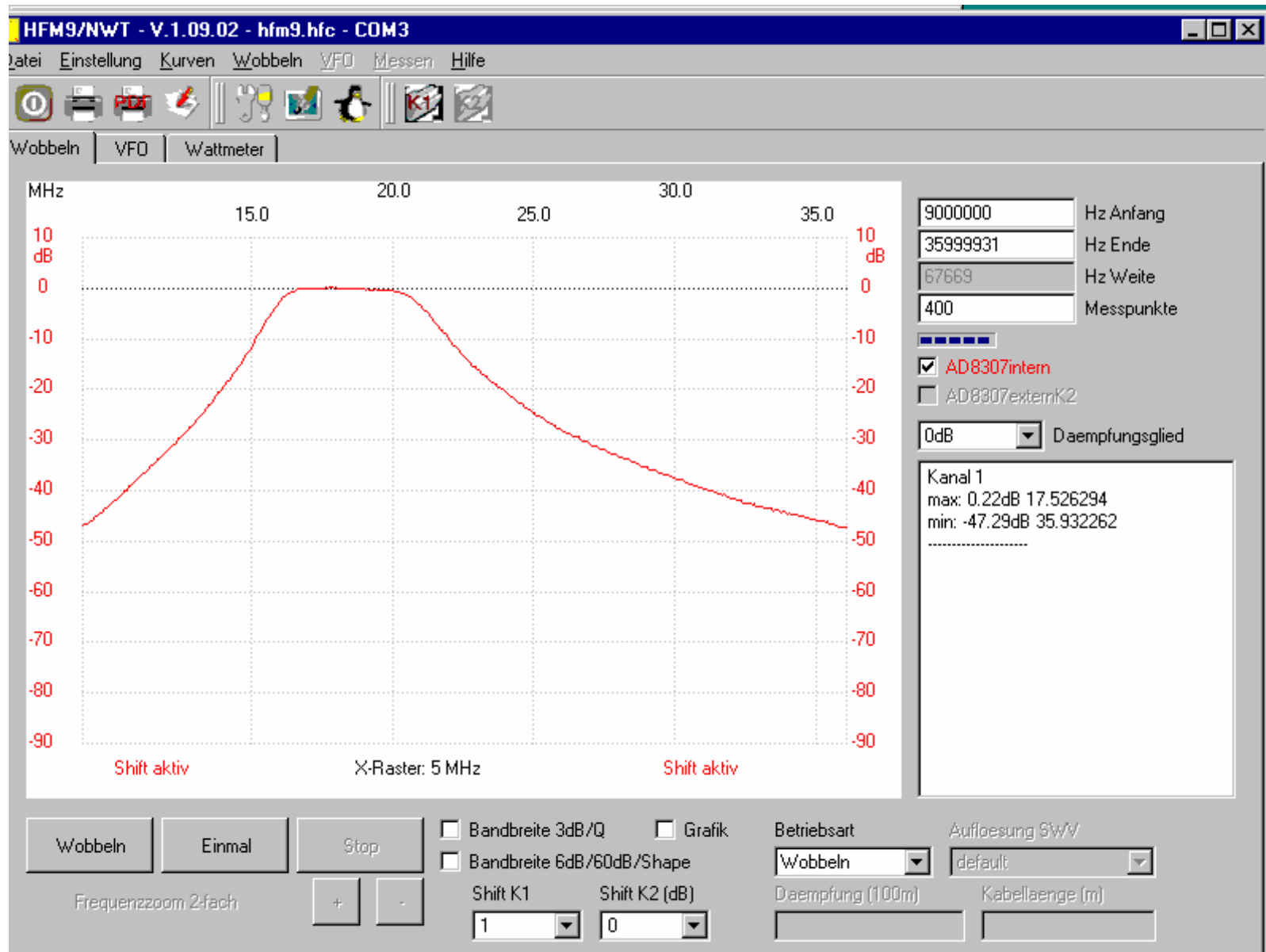
S11 im Durchlassbereich des 15-m-Filters



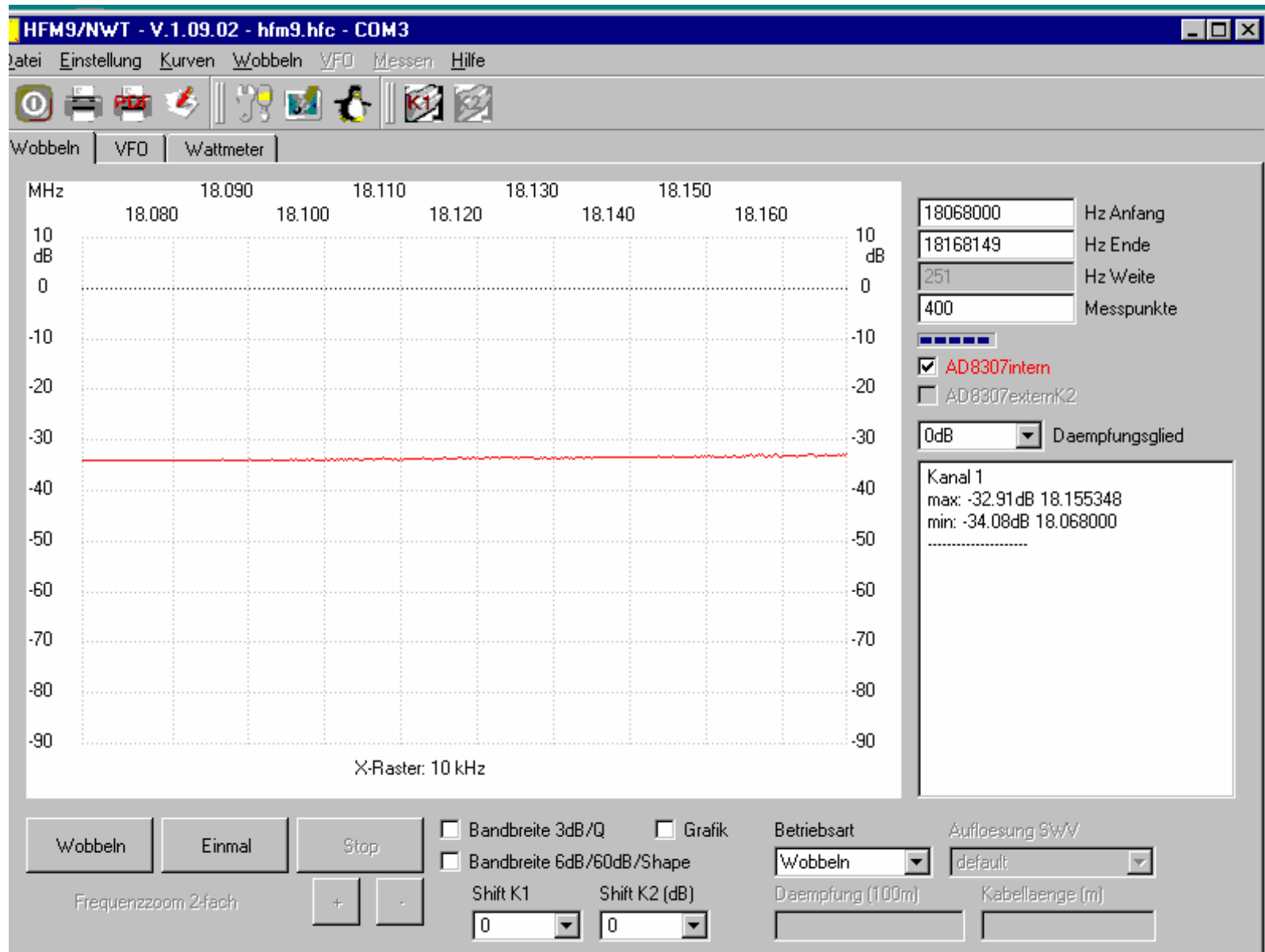
Durchlasskurve des 17-m-Filters



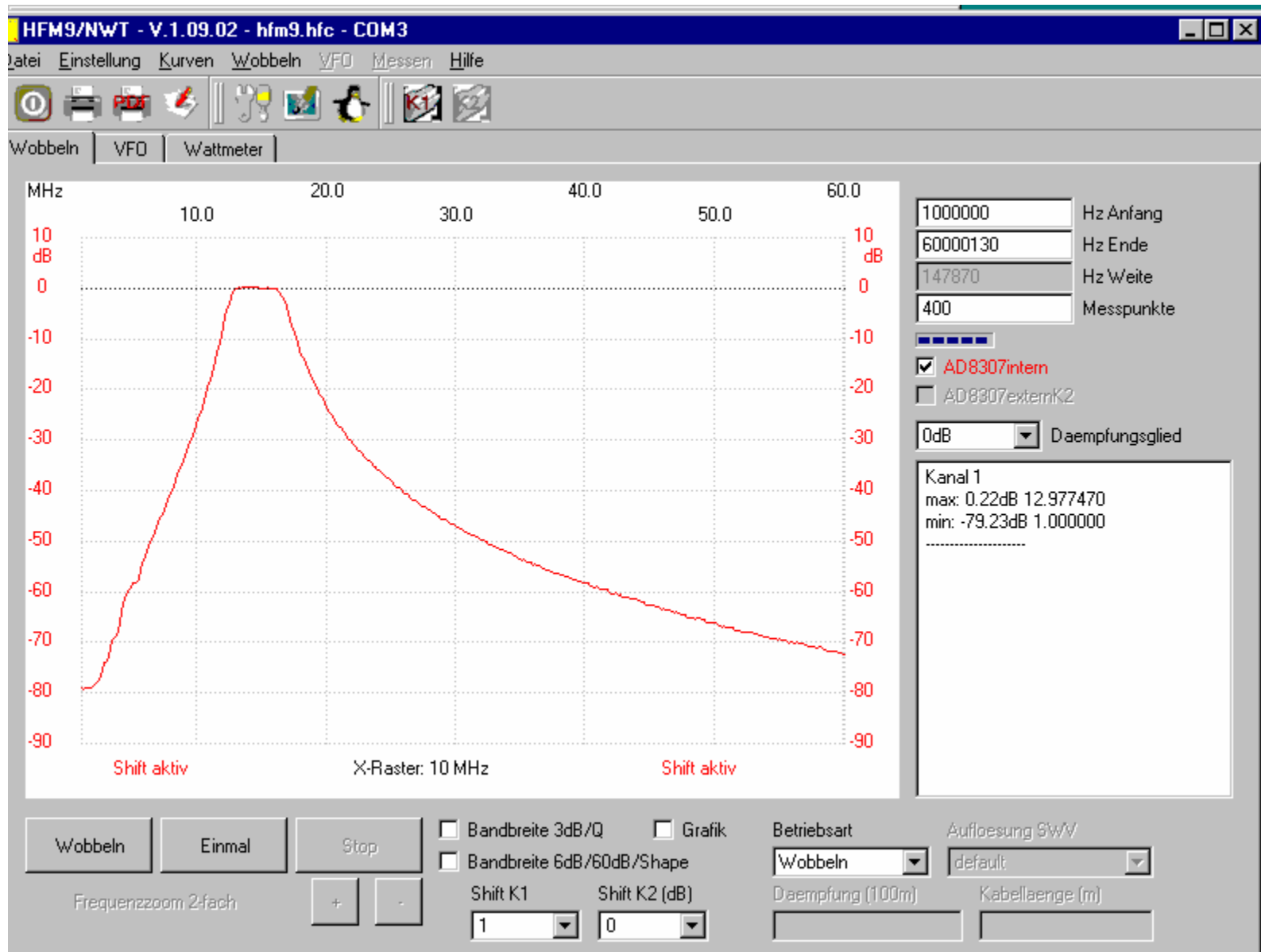
f/2 --- 2f Durchlasskurve des 17-m-Filters



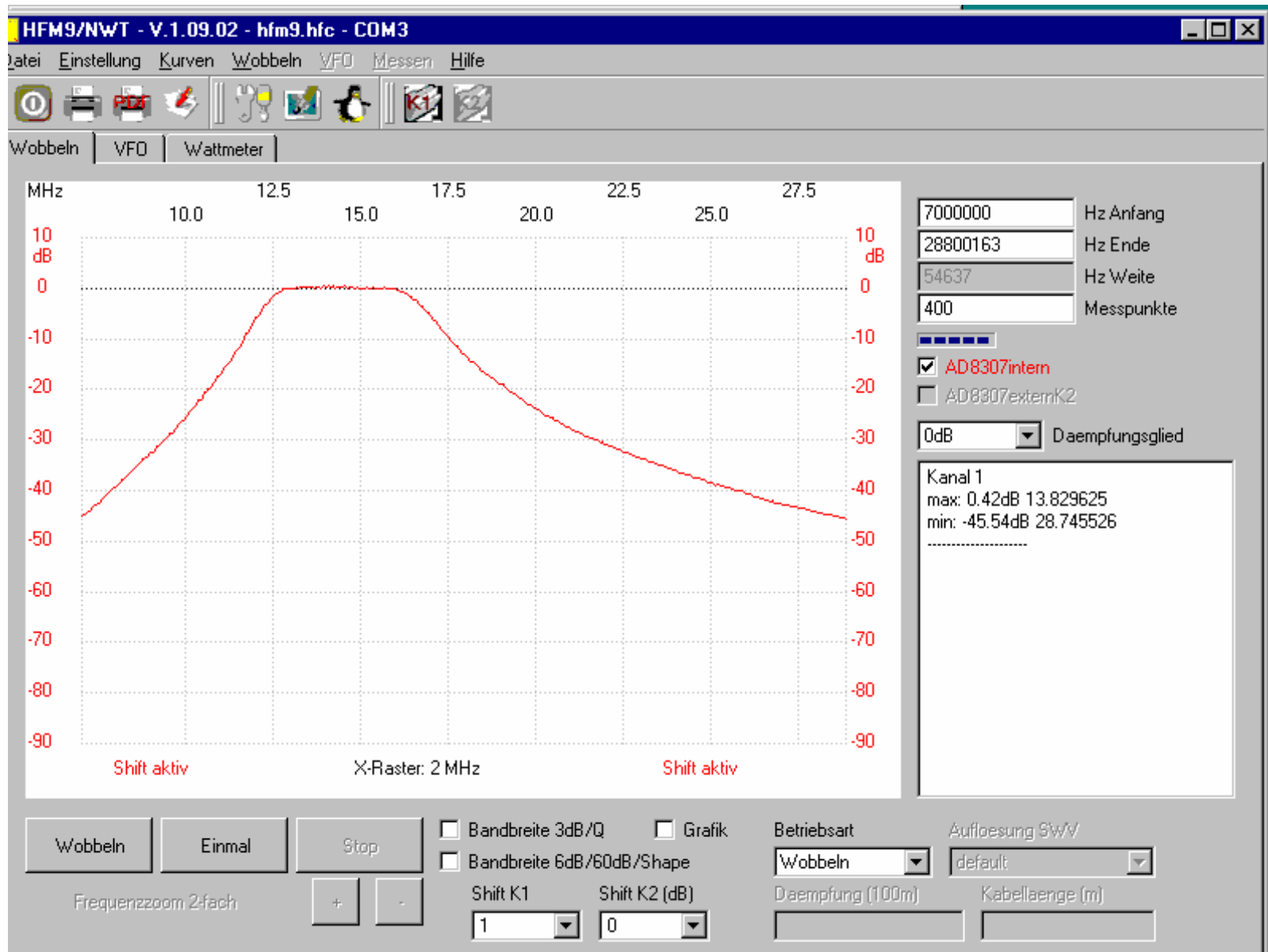
S11 im Durchlassbereich des 17-m-Filters



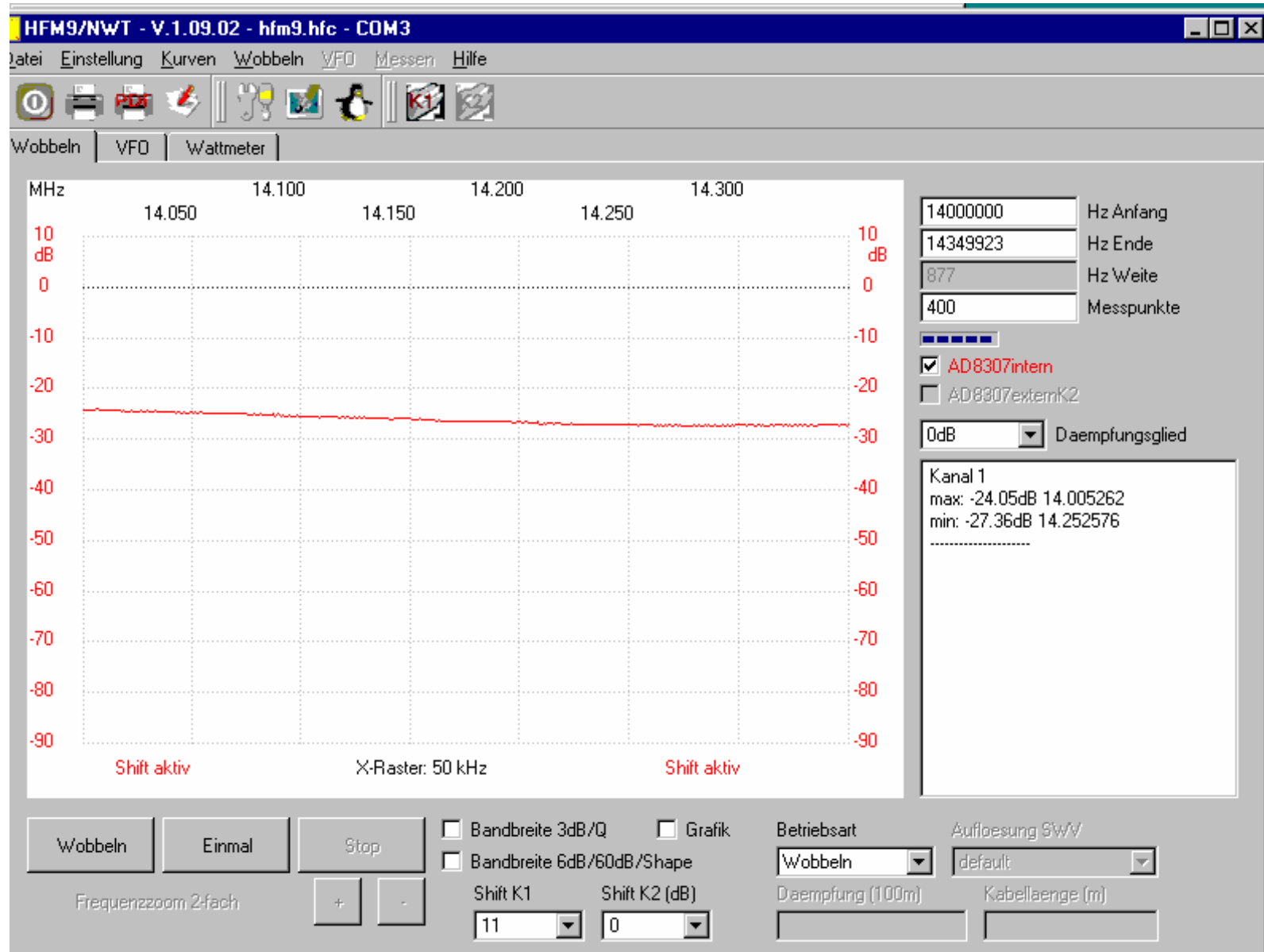
Durchlasskurve des 20-m-Filters



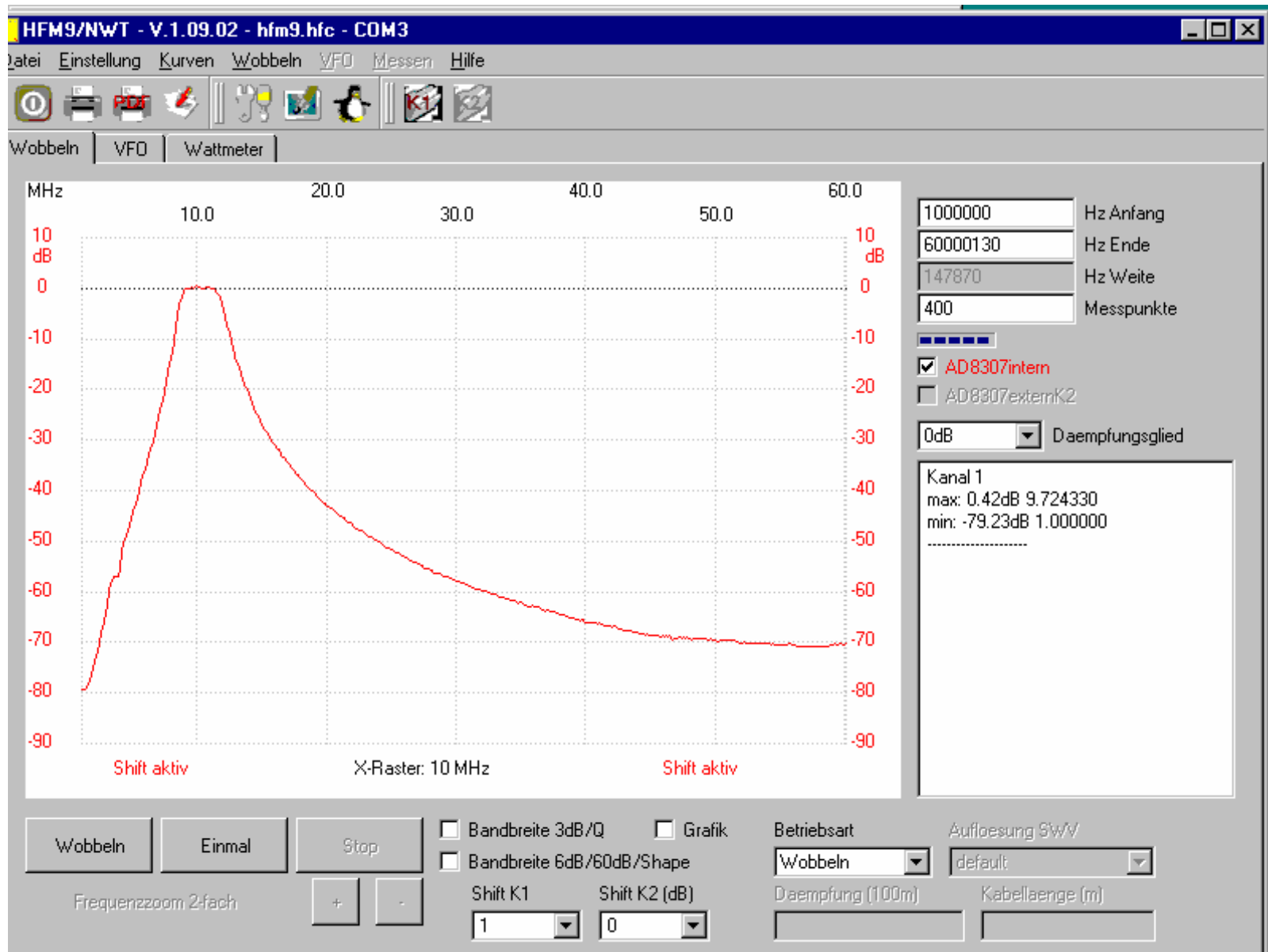
f/2 --- 2f Durchlasskurve des 20-m-Filters



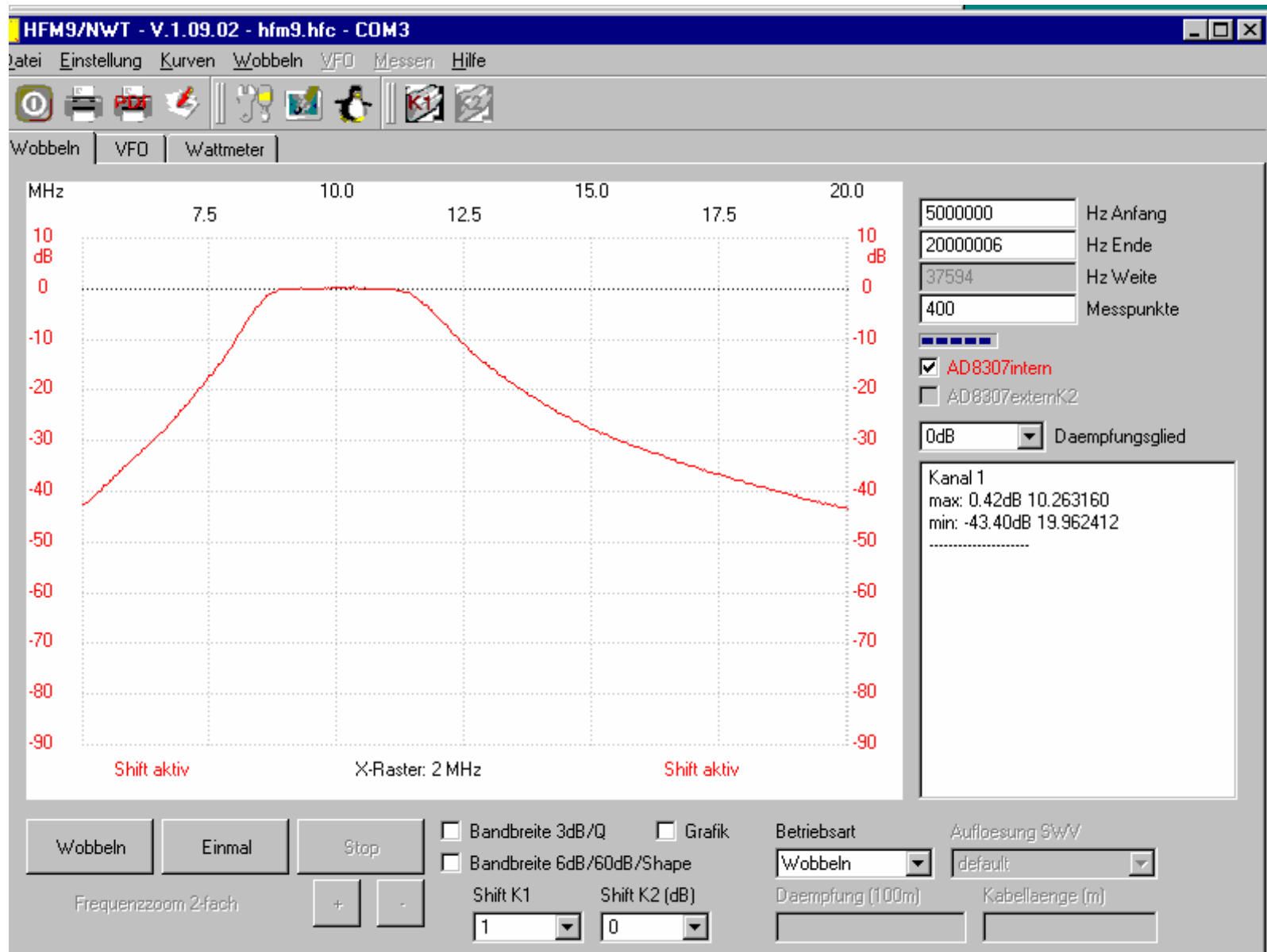
S11 im Durchlassbereich des 20-m-Filters



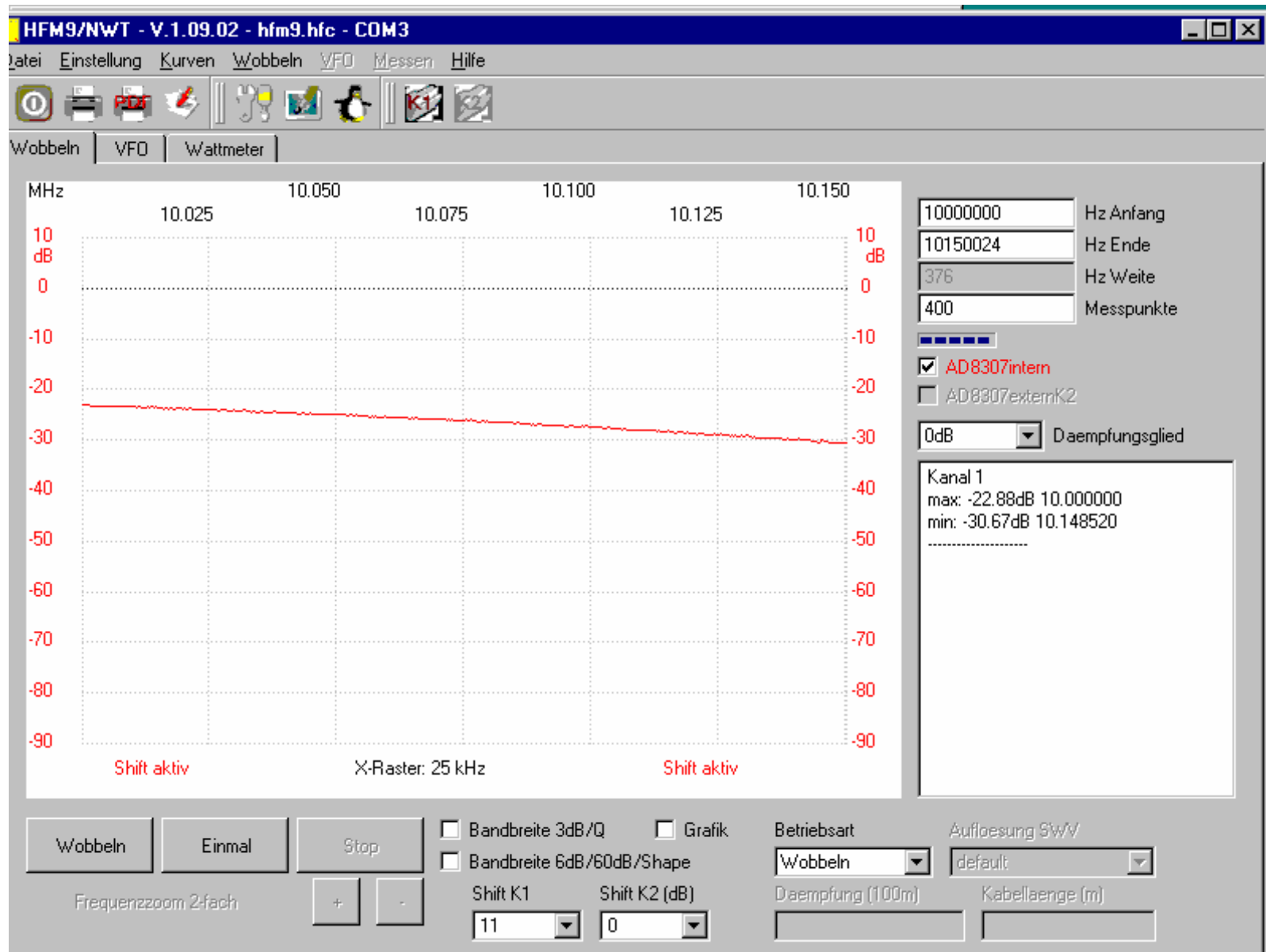
Durchlasskurve des 30-m-Filters



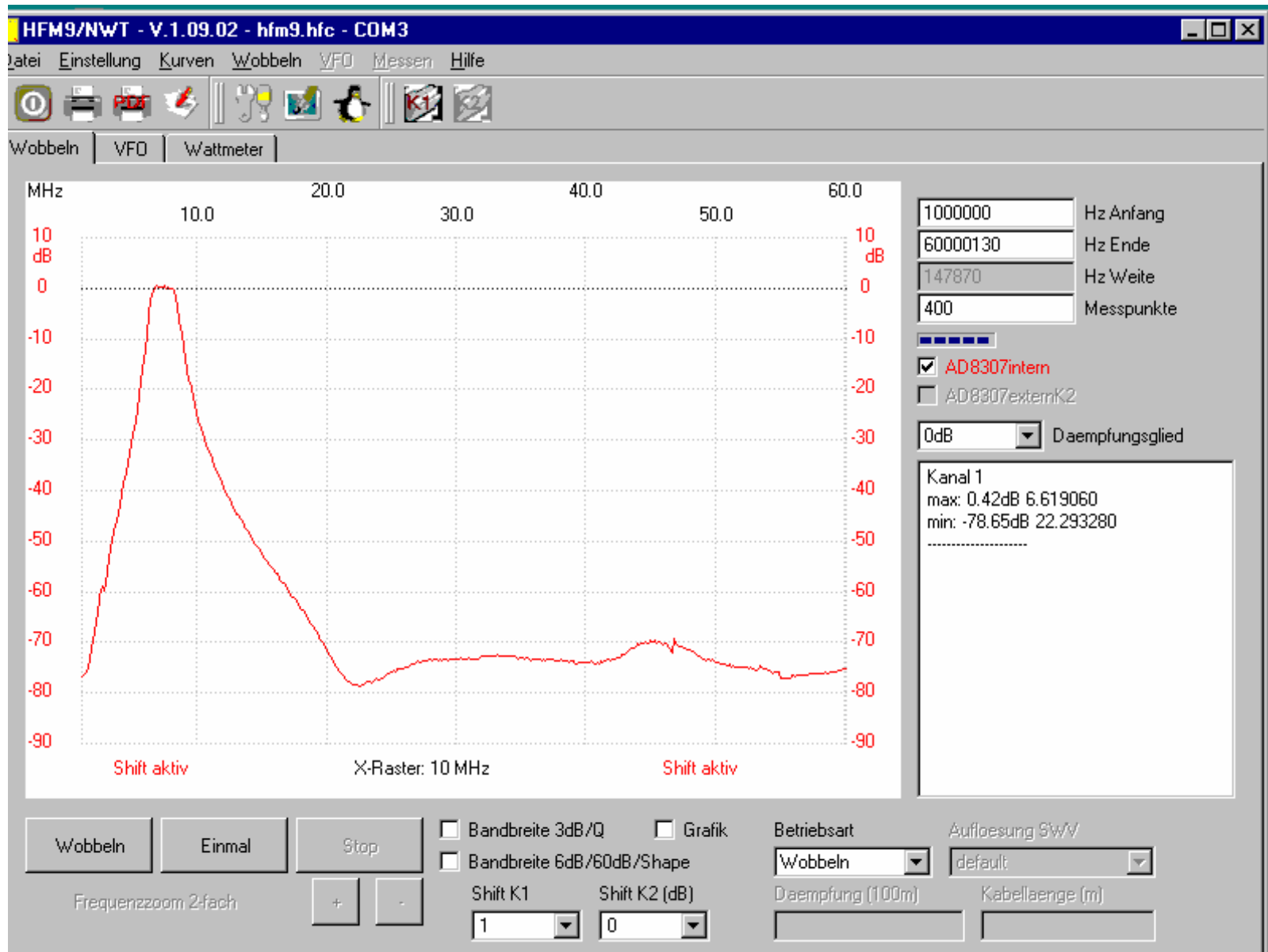
f/2 --- 2f Durchlasskurve des 30-m-Filters



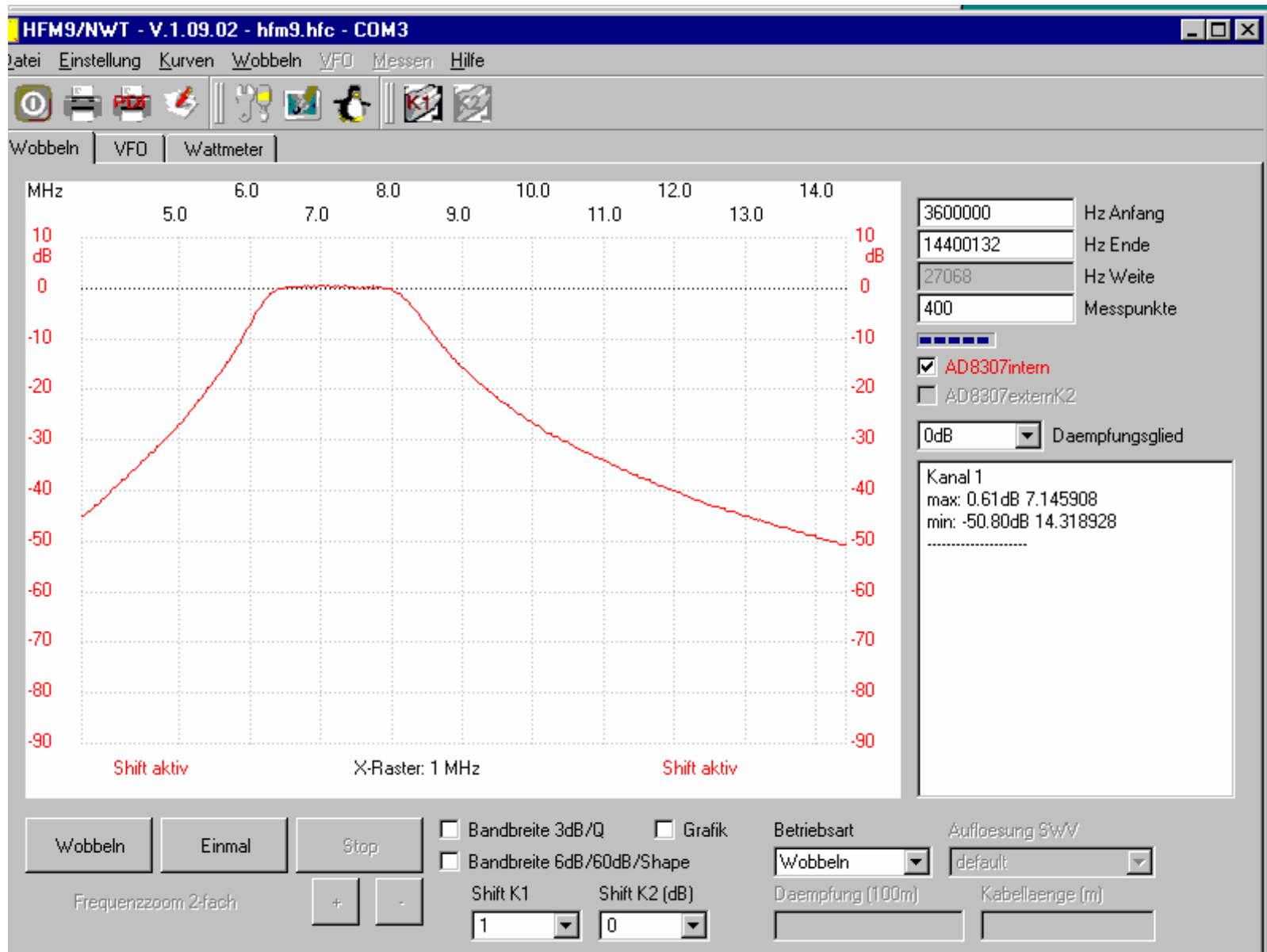
S11 im Durchlassbereich des 30-m-Filters



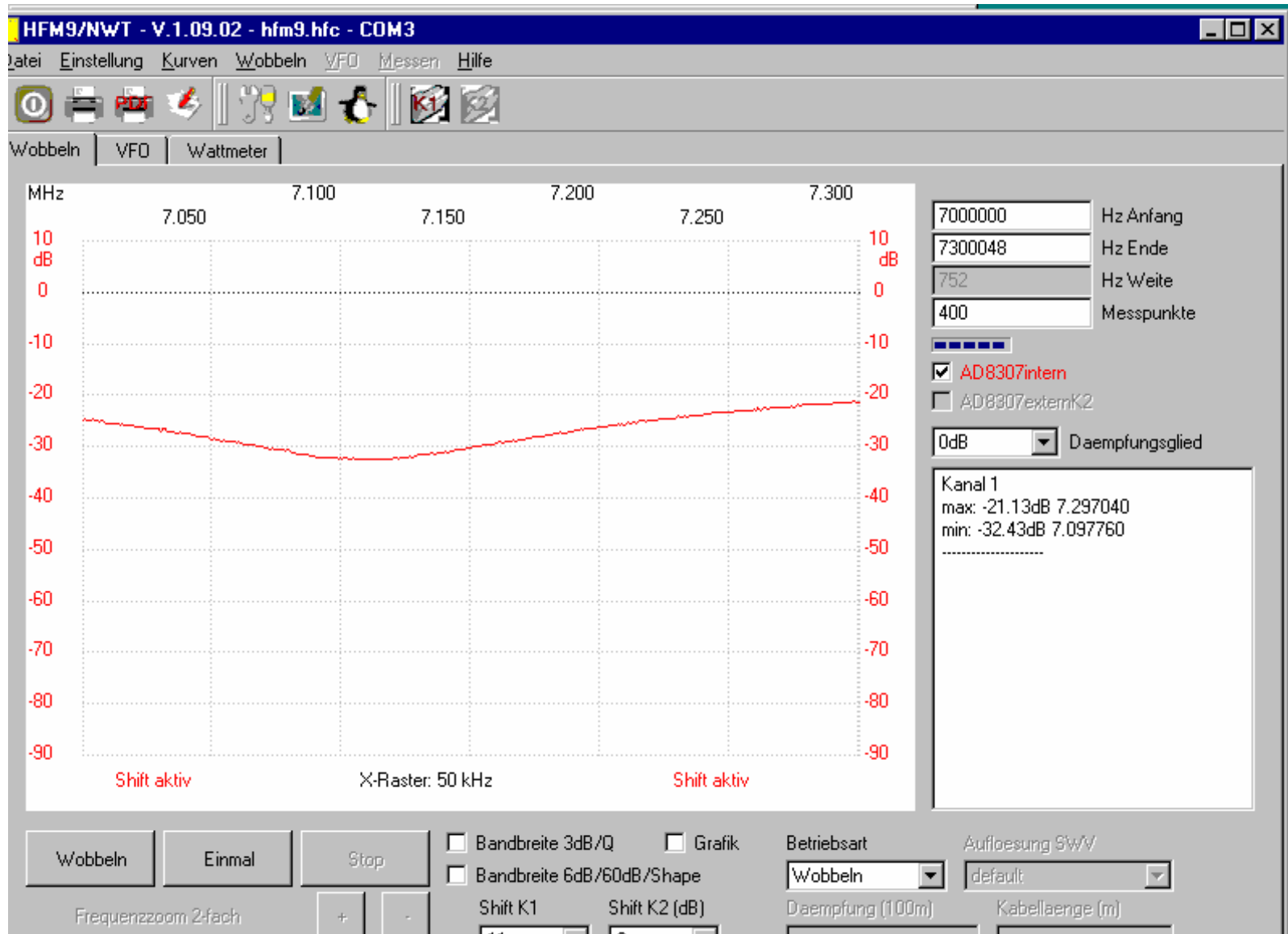
Durchlasskurve des 40-m-Filters



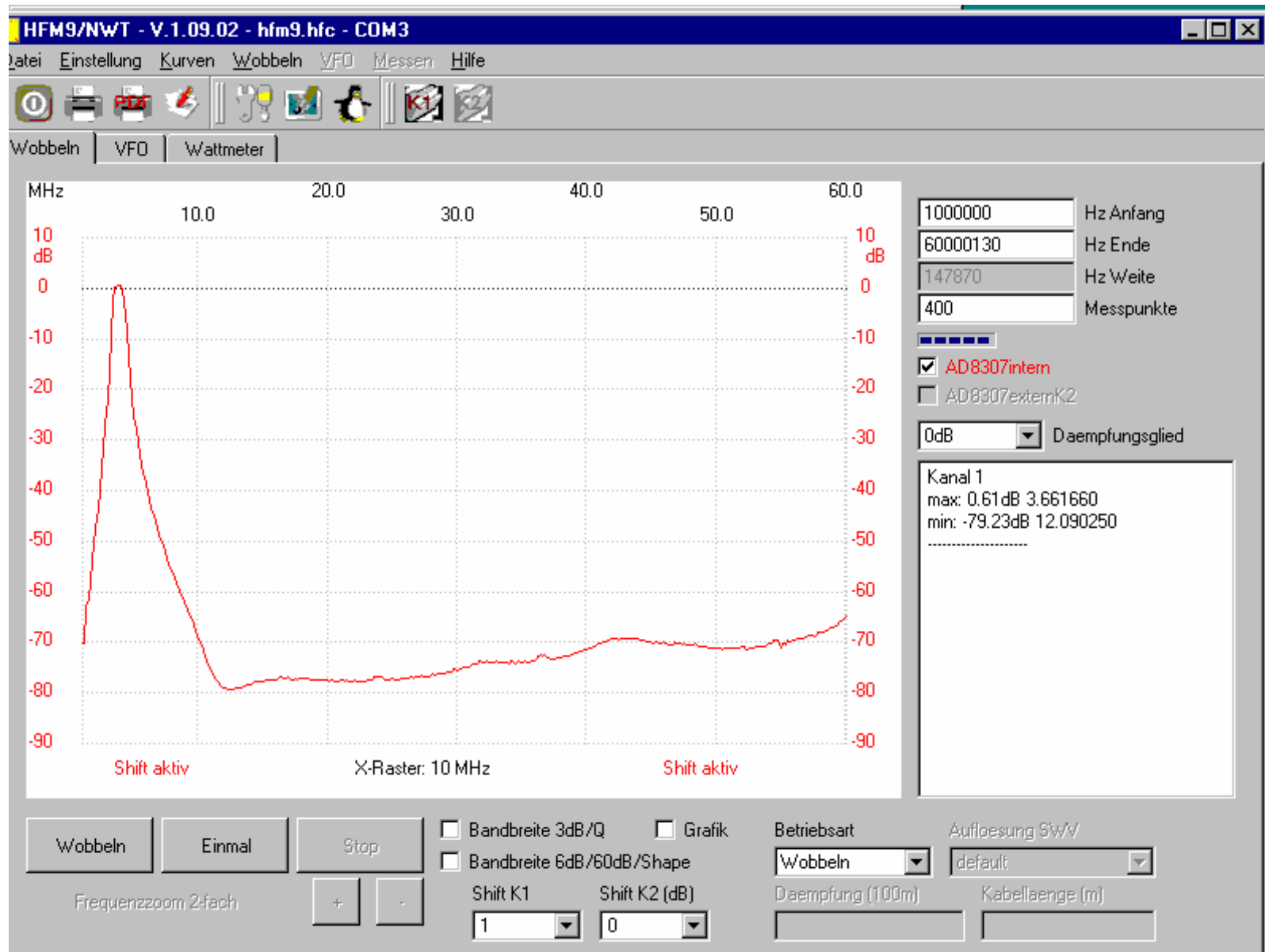
f/2 --- 2f Durchlasskurve des 40-m-Filters



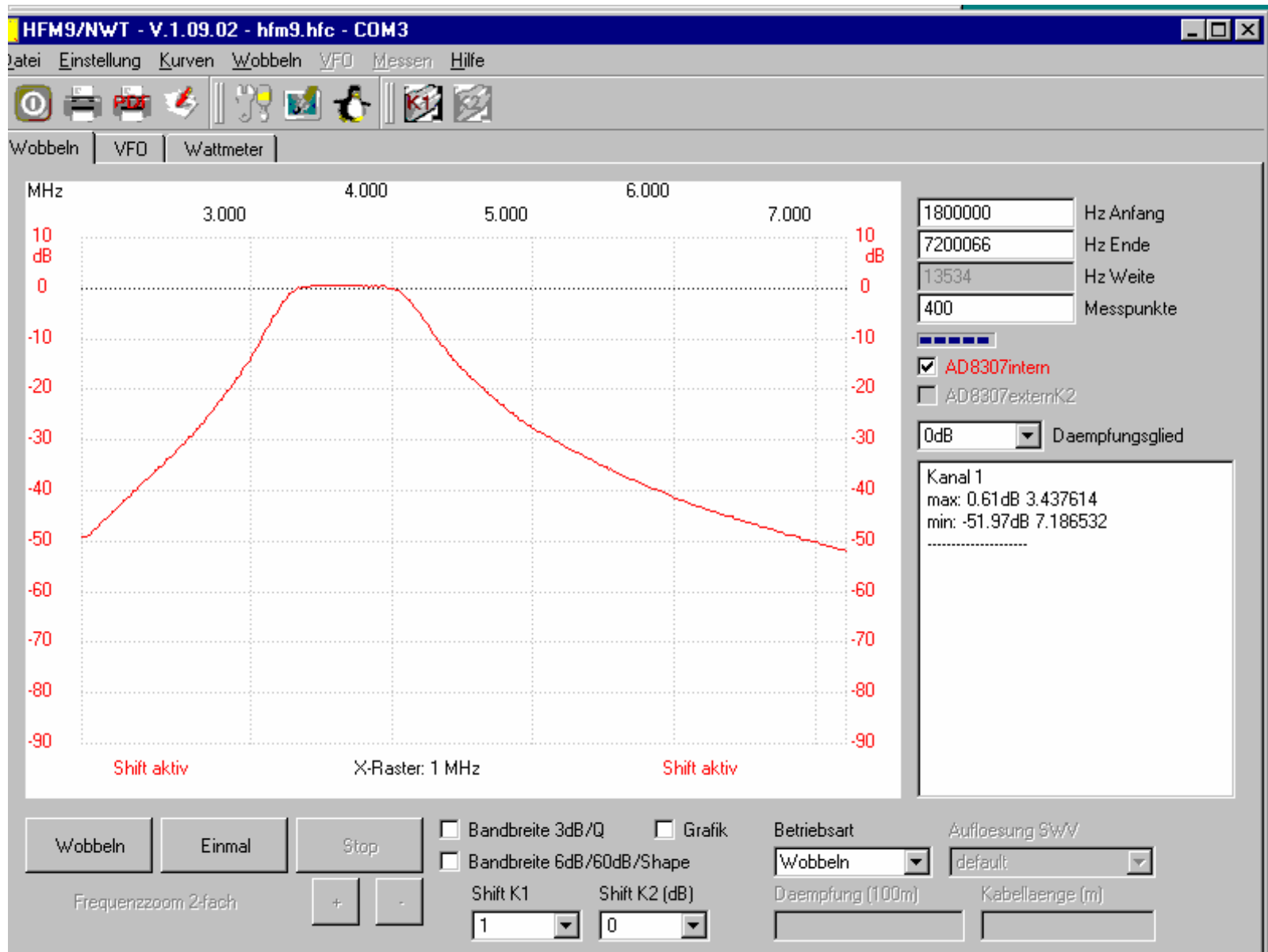
S11 im Durchlassbereich des 40-m-Filters



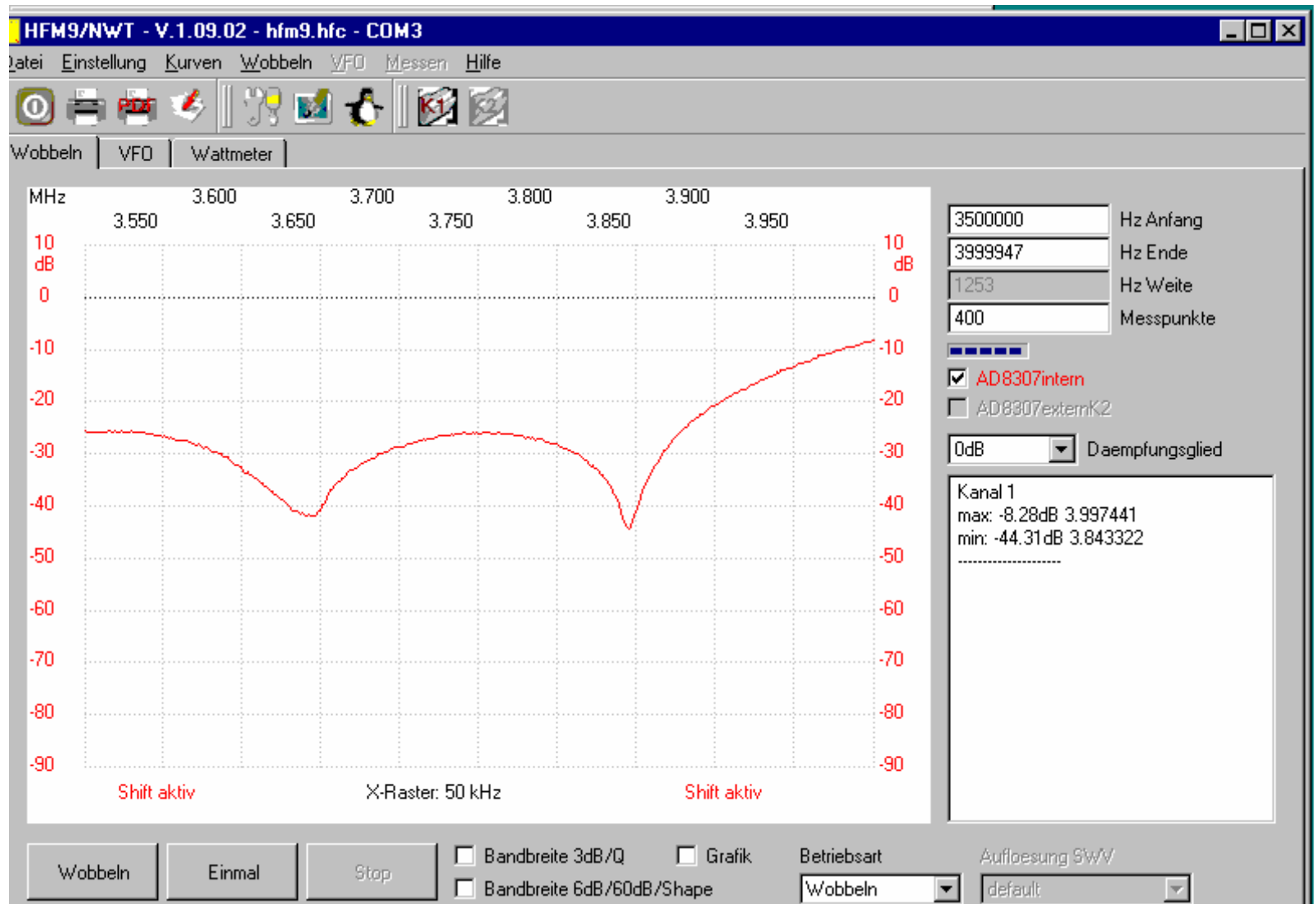
Durchlasskurve des 80-m-Filters



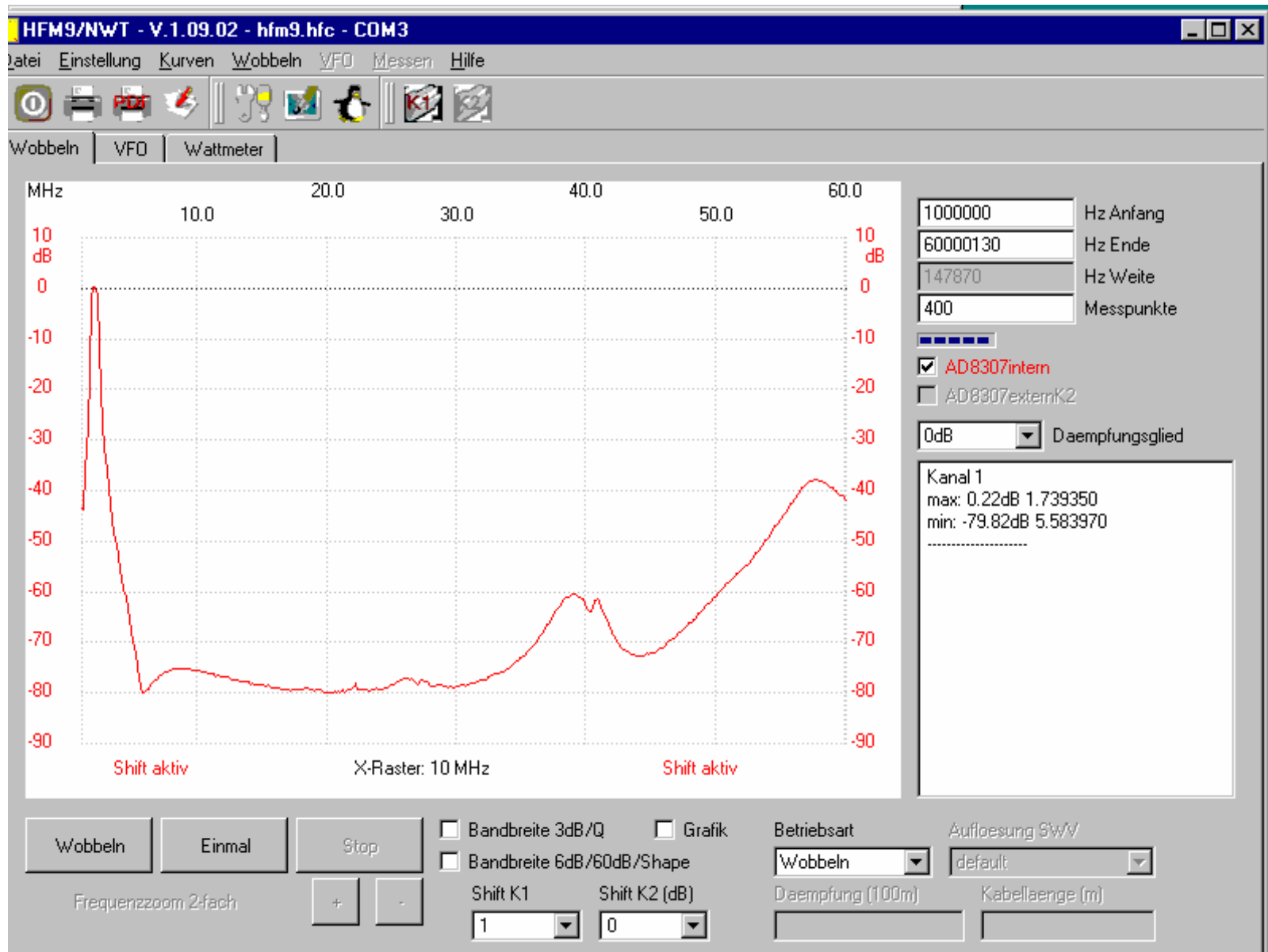
f/2 --- 2f Durchlasskurve des 80-m-Filters



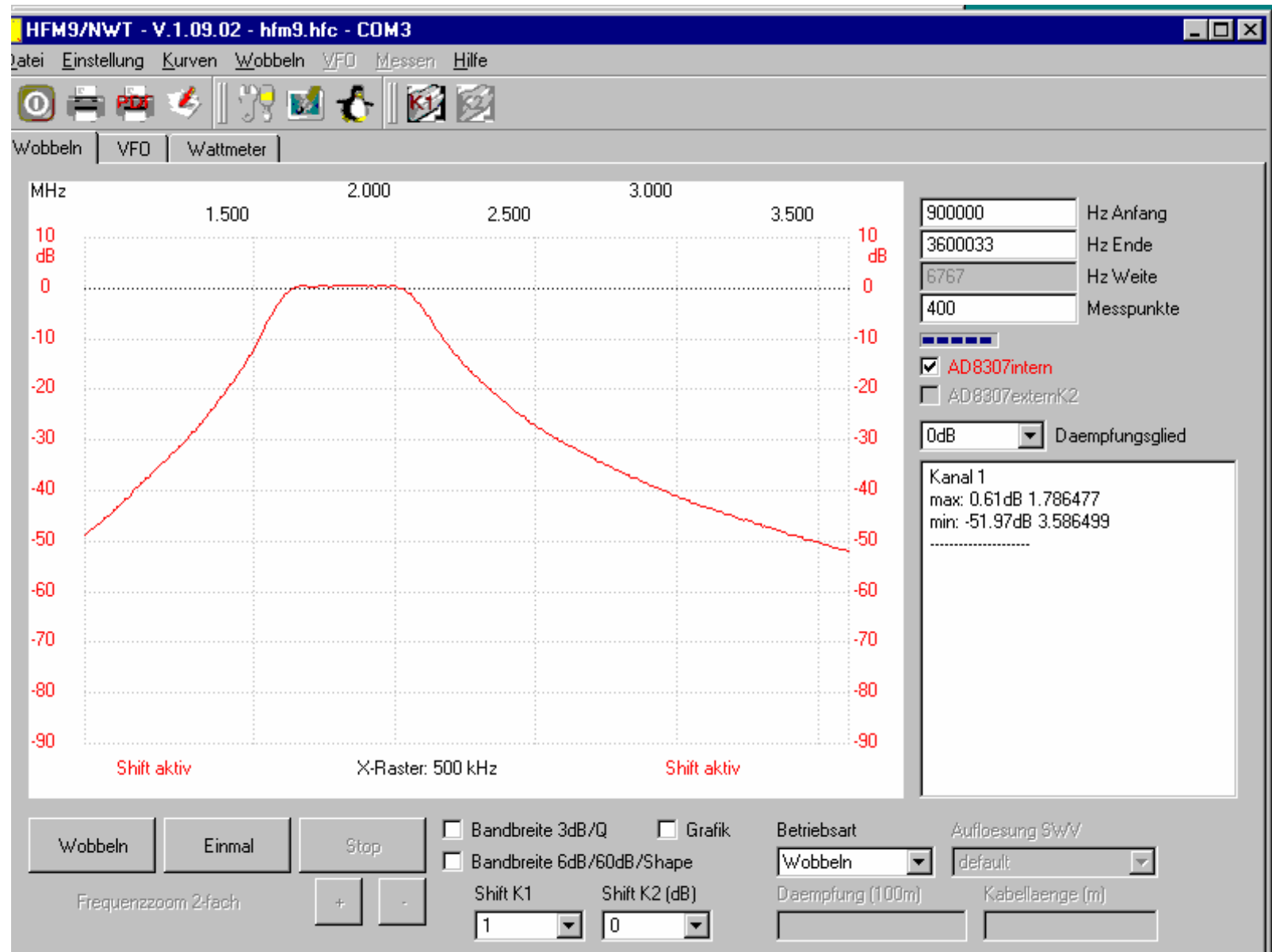
S11 im Durchlassbereich des 80-m-Filters



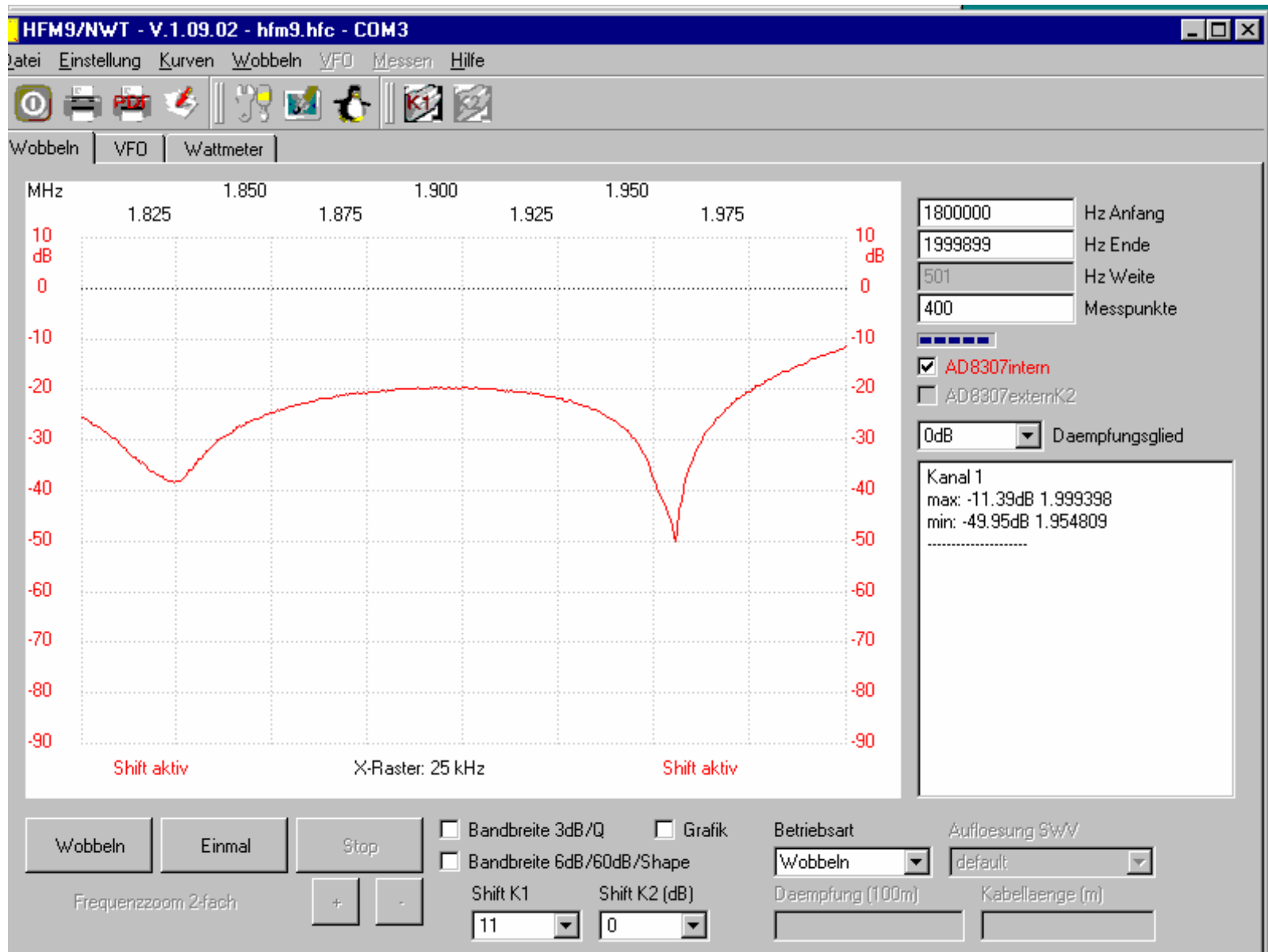
Durchlasskurve des 160-m-Filters



f/2 --- 2f Durchlasskurve des 160-m-Filters



S11 im Durchlassbereich des 160-m-Filters



DGOSA

- 03821 721578
- wwippermann@t-online.de
- www.wolfgang-wippermann.de
- Wolfgang Wippermann, Lerchenweg 10,
18311 Ribnitz-Damgarten